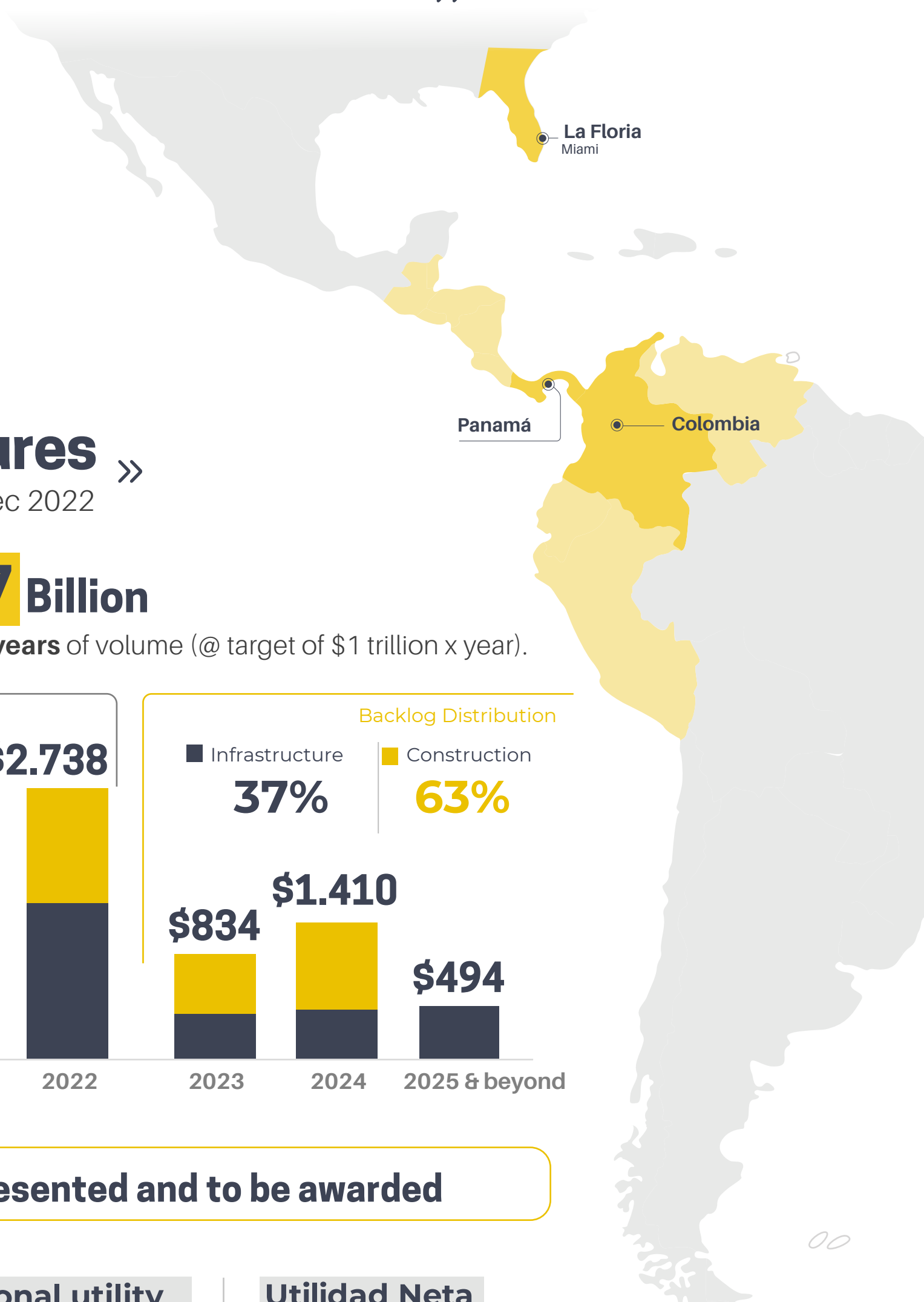


# WE BUILD THE PRESENT AND THE FUTURE WITH VALUE ENGINEERING

## ↓ We are **Concreto** >>

We are a company with 60 years of experience in the development of infrastructure, building and housing projects in Colombia, Panama and the United States.



## ↓ Our Strength **in figures** >>

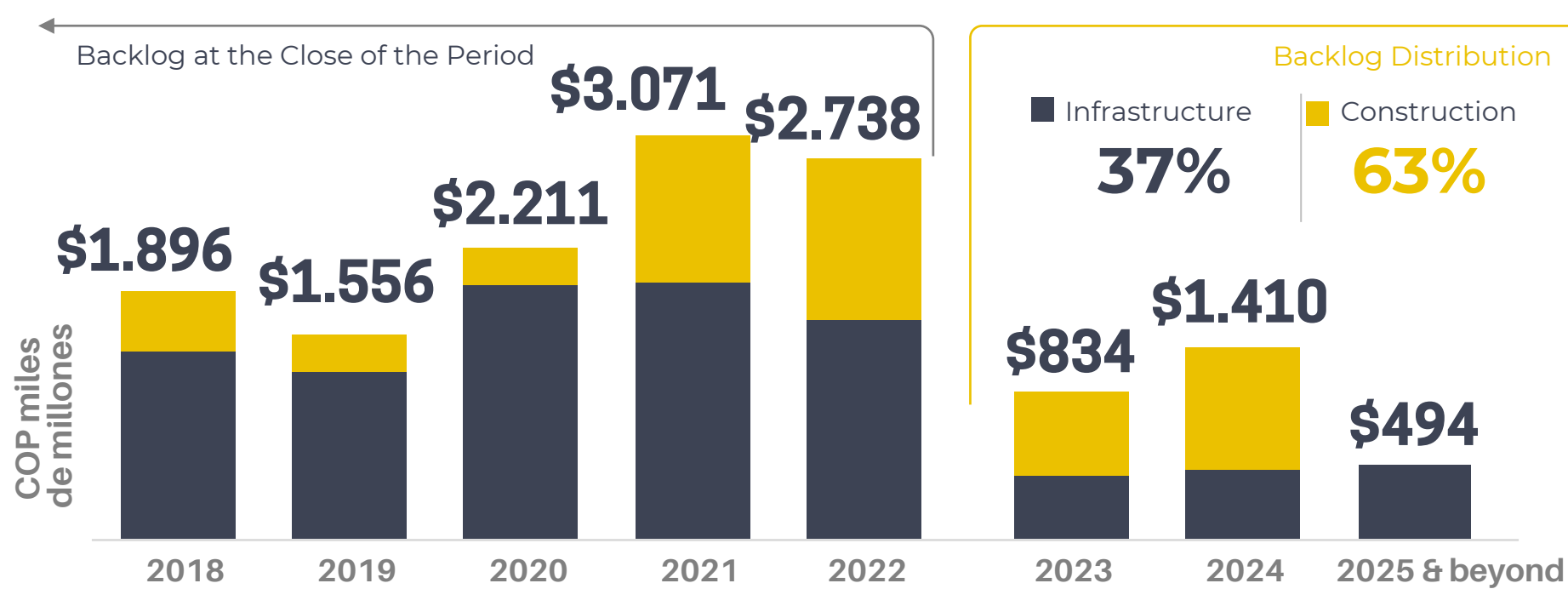
Figures as of Dec 2022



**Backlog**

**COP 2,7 Billion**

Equivalent to **2.7 years** of volume (@ target of \$1 trillion x year).



**COP 3,2 Billion - in offers presented and to be awarded**

**Income**

COP **1,356,630** million

**Operational utility**

COP **252,650** million

**Utilidad Neta**

COP **61,013** million

**Gross profit**

COP **363,567** million

**Ebitda**

COP **287,179** million

**Equity**

COP **1.43** billion

Know the results ANNUAL AND QUARTERLY

[CLICKING HERE](#) 

# ↓ Our portfolio >>

Construction Services

Real Estate

Investments



### Infrastructure and Specialized Construction

Construction of highly complex civil works where – through value engineering and relationship- we increase the margin.



### Double C Designs

Integrative design with builder DNA and value engineering, generating efficiency in time and costs with a design-consulting process.



### Housing Projects

We develop and sell housing units in eight cities in Colombia



### Operation and lease of assets

We develop projects in concessions and real estate for lease in Colombia and the United States, seeking the highest profitability for investors.

## Our TRACK RECORD AND EXPERIENCE

SUPPORT US figures as of Dec 2022



- |  |   |   |
|--|---|---|
| <p>Tunnels<br/><b>183,36 km</b></p>                        | <p>Hotels and Offices<br/><b>1.192.437 m<sup>2</sup></b></p>                  | <p>Housing<br/><b>4.037.313 m<sup>2</sup></b></p>                 |
| <p>Roads and Viaducts<br/><b>802 km</b></p>                | <p>Shopping Centers and Stores<br/><b>1.770.661 m<sup>2</sup></b></p>         | <p>Institutional Buildings<br/><b>1.437.890 m<sup>2</sup></b></p> |
| <p>Hydroelectric Plants<br/><b>4.435 m<sup>2</sup></b></p> | <p>Warehouses and Distribution Centers<br/><b>1.666.731 m<sup>2</sup></b></p> | <p>Bridges<br/><b>4.435 m<sup>2</sup></b></p>                     |
| <p>Airports<br/><b>1.665.590 m<sup>2</sup></b></p>         | <p>Ports<br/><b>80.011 m<sup>2</sup></b></p>                                  |   |

Learn more about OUR PORTFOLIO

[CLICKING HERE](#)



# SOME OF OUR PROJECTS



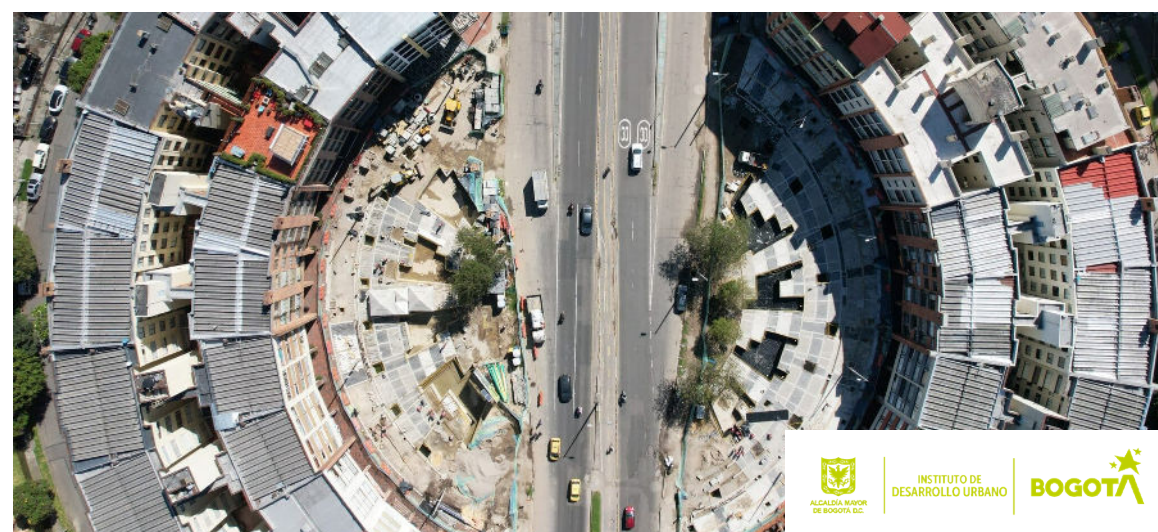
## Infrastructure



Bogotá, Cundinamarca  
**TRANSMILENIO AVENUE 68 – GROUP 5**



Soacha, Cundinamarca  
**PATIO PORTAL EL VÍNCULO**



Bogotá, Cundinamarca  
**CICLOVIA CALLE 116**



Bogotá, Cundinamarca  
**TRANSMILENIO AVENUE 68 – GROUP 8**

## Building



Ciudad de Panamá, Ciudad de Panamá  
**Project EDEM**



Bogotá, Cundinamarca  
**HOTEL HILTON CORFERIAS**



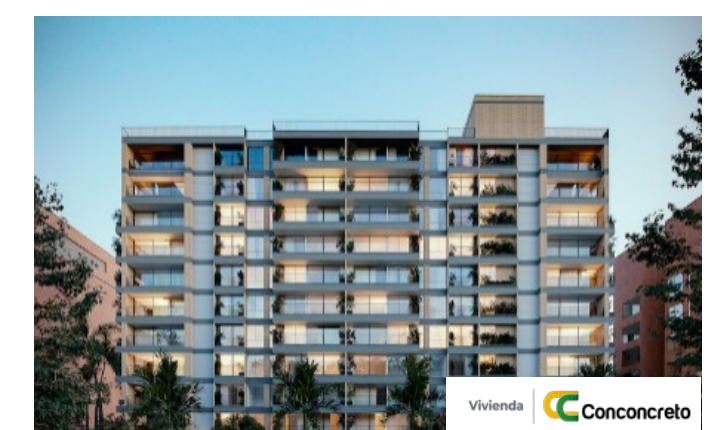
Medellín, Antioquia  
**CONTREE PALMAS**



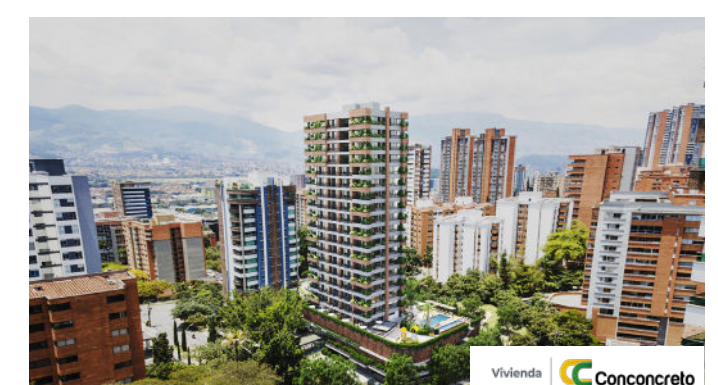
Neiva, Huila  
**HOTEL MOVICH LAS LOMAS – RIONEGRO**



Tenjo, Cundinamarca  
**INDUSTRIAL PARK LÓGIKA SIBERIA**



Sector Zuñiga, Envigado  
**RUA 19**



Medellín, Antioquia  
**CONTREE CASTROPOL**

Learn more about  
**OUR PROJECTS**

**CLICKING HERE**

DISEÑO GEOMÉTRICO DE VIAS

CONFORT

GEOTECNIA

CONTRÉE CASTRO  
Medellín  
Arquitectura e Ingeniería

OUR

# TRAJECTORY AND EXPERIENCE

ENDORSES US IN DESIGN

figures as of Dec 2022



Infrastructure  
**606.674 m<sup>2</sup>**



Hotelier  
**97.636 m<sup>2</sup>**



Housing  
**1.212.489 m<sup>2</sup>**



Industry  
**1.028.202 m<sup>2</sup>**



Institutional  
**191.219 m<sup>2</sup>**



Commerce  
**126.000 m<sup>2</sup>**



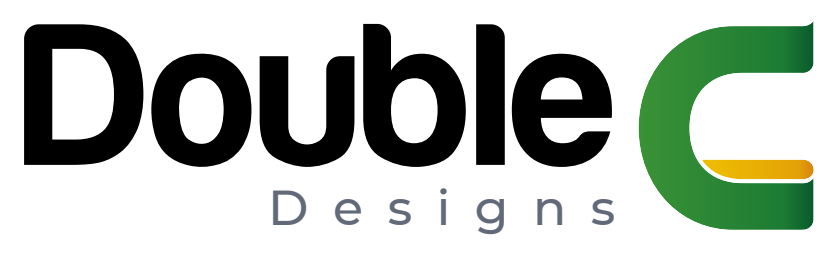
Mixed  
**514.756 m<sup>2</sup>**



Town planning  
**3.957.500 m<sup>2</sup>**



**MORE THAN  
4.000.000 M<sup>2</sup>  
DESIGNED**



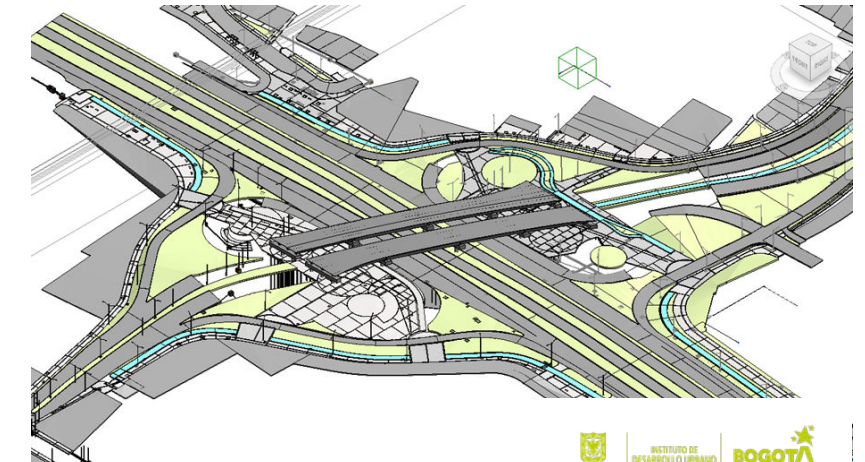
## SOME OF OUR PROJECTS



Bogotá, Cundinamarca  
**TRANSMILENIO, AVENUE 68 - GROUP 5**



Bogotá, Cundinamarca  
**TRANSMILENIO, AVENUE 68 - GROUP 8**



Bogotá, Cundinamarca  
**EXCHANGER - AV BOSA**

LET'S TALK BUSINESS

**CLICKING HERE**

[www.conconcreto.com](http://www.conconcreto.com)

