

**Investment
portfolio**

**Real estate
projects**



**Construction
services**

 **Conconcreto**

We inspire a
sustainable future

A stylized map of Latin America and the Caribbean. The landmasses are shown in light gray. Several regions are highlighted in a solid orange color: Florida in the United States, a portion of Mexico (Chiapas and Oaxaca), the Caribbean island of Puerto Rico, and the entire countries of Colombia, Venezuela, Ecuador, Peru, and Brazil. The text is positioned in the upper right quadrant of the image.

We have developed more than

2.600

works that have lead
growth to Colombia
and the Region

Our Market

The Company's Internationalization Strategy focuses on Central America, South Florida and South America, through the identification of business opportunities and specialized allies, which allow us to add value in the life cycle of construction projects.

Who We Are

▼ **Contree Palmas**
Medellín, Antioquia

We are a company with 60 years of experience in the development of infrastructure, building and housing projects in Colombia, Panama and the United States.

We generate value in all the stages of sustainable development of assets and territories, through investment and the impeccable execution of construction projects.

In Conconcreto, we inspire a sustainable future

Our Solidity in Figures

Backlog

COP
3,1
BILLION

the highest in the last five years.

Income

COP 754.151 million
31,24% more than in 2020.

Ebitda

COP 138.931 million

Equity

COP 1,61 billion

* Figures consolidated to 2021

Construction services



- Structuring
- Design
- Construction
- Asset and operations management

Real estate projects



- Development and sale of housing

Investment portfolio



- Concessions
- Real estate funds

We accompany the entire life cycle of the projects

Our trajectory and experience endorse us



Tunnels
179,62 km



Hotels and Offices
1.192.437 m²



Housing
4.030.741 m²



Roads and Viaducts
802 km



Shopping Centers and Stores
1.770.660 m²



Institutional Buildings
1.404.605 m²



Hydroelectric Plants
4.435 m²



Warehouses and Distribution Centers
1.665.590 m²



Bridges
4.435 m²



Airports
1.665.590 m²



Ports and docks
80.011 m²

We differentiate ourselves through:

INNOVATION DIGITAL TRANSFORMATION SUSTAINABILITY PRODUCTIVITY INDUSTRIALIZATION



We have developed capabilities, which allow us to generate value for our related audiences, from the understanding of their needs and our commitment to inspiring a sustainable future.

▼ **Vía 40 Express**
Chinauta – Bogota Two-Lane Highway
Girardot, Cundinamarca



- 1** We are a client-centered organization and we generate value throughout the business chain.
- 2** We lead the digital transformation in construction.
- 3** We transform the environment to sustainably improve the quality of life.
- 4** We act with integrity, transparency, respect and social responsibility.
- 5** We develop and build projects with high productivity, efficiency and profitability.
- 6** We adapt to change and evolve innovatively.

How We Do It Differently

Pillar 1

Productivity



- › We plan.
- › We integrate designs.
- › We execute impeccably.
- › We implement value engineering.



Pillar 2

Industrialization



- › We standardize services.
- › We prefabricate materials.
- › We implement materials and service logistics.

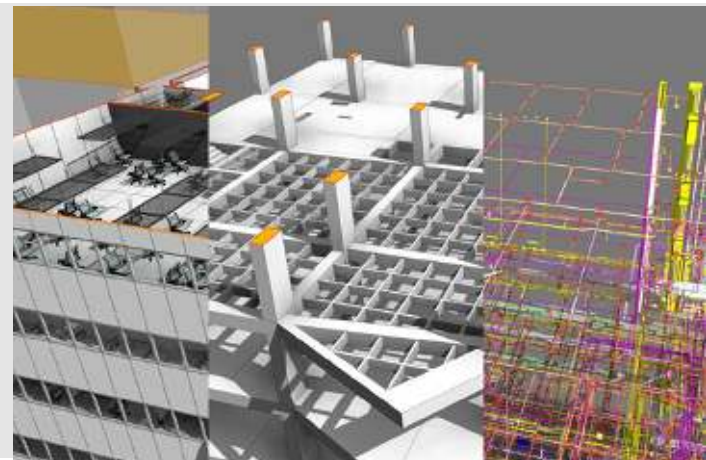


Pillar 3

Digital Transformation and Innovation



- › Innovative processes, tools and methodologies for the section throughout the value chain.
- › We apply the BIM methodology.
- › We mature the digital ecosystem.
- › We promote innovative culture.



Pillar 4

Sustainability



- › We implement social, environmental and economic initiatives.
- › We apply resource and material efficiency and sustainable, efficient processes.



**“ In Conconcreto,
what we do is the
reflection of what
we believe ”**



60
YEARS

**BUILDING WITH
HUMAN SENSE**

**60 MORE INSPIRING
A SUSTAINABLE FUTURE**

**Talk
business**
scanning
this code



@concreto



concreto.com

RELATIONSHIP WITH THE INVESTOR

Daniel Tirado Pelaez
ir@concreto.com - Tel: (604) 4025700 Ext. 5275
Carrera 43A No. 18 Sur-135 - Medellín, Antioquia